

FORM: 1661-C
NAME: Tourney Fungicide
KIND: Booklet Label
SPEC: Total 6.25 x 6.5

DATE: 8.31.17
PRODUCT SIZE: 5 Pounds
LABEL SIZE: 5.5"(w) x 6.5"(h) - book closed
11"(w) x 6.5"(h) - book open
6.25"(w) x 6.5"(h) - base

BLACK
CYAN
MAGENTA
YELLOW

Front

ACCEPTED
VIA NOTIFICATION
LABEL NOT REVIEWED

Doc id:
558233

July 24, 2018

New York State Department
of Environmental Conservation
Division of Materials Management
Pesticide Product Registration



GROUP 3 FUNGICIDE

Tourney®



F U N G I C I D E



TURFGRASS FUNGICIDE
**A SYSTEMIC FUNGICIDE FOR CONTROL OF
CERTAIN TURFGRASS DISEASES**

Active Ingredient	By Wt
*Metconazole	50%
Other Ingredients	50%
Total	100%

*5-[[4-chlorophenyl)methyl]-2,2-dimethyl-1-(1H-1,2,4-triazol-1-ylmethyl)cyclopentanol
Tourney® Fungicide is a water dispersible granule containing 50% active ingredient.

EPA Reg. No. 59639-144
EPA Est. No. 67545-AZ-1

**KEEP OUT OF
REACH OF CHILDREN
CAUTION**
SEE NEXT PAGE FOR ADDITIONAL
PRECAUTIONARY STATEMENTS.



NET CONTENT 5 POUNDS

Form 1661-C

6.5"

5.5"

FIRST AID
If swallowed: Call a poison control center or doctor immediately for treatment advice. Have person sip a glass of water if able to swallow. Do not induce vomiting unless told to do so by the poison control center or doctor. Do not give anything by mouth to an unconscious person.
If in eyes: Hold eye open and rinse slowly and gently with water for 15-20 minutes. Remove contact lenses, if present, after the first 5 minutes, then continue rinsing eye. Call a poison control center or doctor for treatment advice.
HOT LINE NUMBER
Have the product container or label with you when calling a poison control center or doctor, or going for treatment. You may also contact **800-892-0099** for emergency medical treatment information.

PRECAUTIONARY STATEMENTS
HAZARDS TO HUMANS & DOMESTIC ANIMALS
CAUTION
Harmful if swallowed. Causes moderate eye irritation. Avoid contact with eyes. Wash thoroughly with soap and water after handling and before eating, drinking, chewing gum or using tobacco.

PERSONAL PROTECTIVE EQUIPMENT (PPE):
Applicators and other handlers must wear: long-sleeved shirt and long pants, socks and shoes.

User Safety Requirements
Follow the manufacturer's instructions for cleaning/maintaining PPE. If there are no such instructions for washables exist, use detergent and hot water. Keep and wash PPE separately from other laundry.

USER SAFETY RECOMMENDATIONS
Users should:
• Wash hands before eating, drinking, chewing gum, using tobacco or using the toilet.
• Remove clothing/PPE immediately if pesticide gets inside. Then wash thoroughly and put on clean clothing.
• Remove PPE immediately after handling this product. As soon as possible, wash thoroughly and change into clean clothing.

ENVIRONMENTAL HAZARDS
This pesticide is toxic to shrimp, fish and aquatic invertebrates. Do not apply directly to water, or to areas where surface water is present or to intertidal areas below the mean high water mark. Do not contaminate water by disposing of equipment washwaters or rinsate. Drift and runoff from treated areas may be hazardous to aquatic organisms in water adjacent to treated areas.

Groundwater Advisory: This chemical has properties and characteristics associated with chemicals detected in groundwater. The use of this chemical in areas where soils are permeable, particularly where the water table is shallow, may result in groundwater contamination.

Surface Water Advisory: This product may contaminate water through drift of spray in wind. This product has a high potential for runoff for several months or more after application. Poorly draining soils or soils with shallow water tables are more prone to runoff that contains this product. A level, well-maintained vegetative buffer strip between areas to which this product is applied and surface water features, such as ponds, streams and springs, will reduce the potential for contamination of water from rainfall runoff. Runoff of this product will be reduced by avoiding applications when rainfall is forecasted to occur within 48 hours.

DIRECTIONS FOR USE
It is a violation of Federal law to use this product in a manner inconsistent with its labeling.

READ ENTIRE LABEL. USE STRICTLY IN ACCORDANCE WITH PRECAUTIONARY STATEMENTS AND DIRECTIONS, AND WITH APPLICABLE STATE AND FEDERAL REGULATIONS.

Do not apply this product in a way that will contact workers or other persons, either directly or through drift. Only protected handlers may be in the area during application. For any requirements specific to your State or Tribe, consult the agency responsible for pesticide regulation.

AGRICULTURAL USE REQUIREMENTS
Use this product only in accordance with its labeling and with the Worker Protection Standard, 40 CFR part 170. This Standard contains requirements for the protection of agricultural workers on farms, forests, nurseries and greenhouses and handlers of agricultural pesticides. It contains requirements for training, decontamination, notification and emergency assistance. It also contains specific instructions and
(continued)

(continued)
exceptions pertaining to the statements on this label about personal protective equipment (PPE) and restricted entry interval. The requirements in this box only apply to uses of this product that are covered by the Worker Protection Standard.
Do not enter or allow worker entry into treated areas during the restricted entry interval (REI) of 12 hours.
PPE required for early entry to treated areas that is permitted under the Worker Protection Standard and that involves contact with anything that has been treated, such as plants, soil or water, is coveralls, chemical-resistant gloves made of any waterproof materials, socks and shoes.

NON-AGRICULTURAL USE REQUIREMENTS
The requirements in this box apply to the uses of this product that are NOT within the scope of the Worker Protection Standard for agricultural pesticides (40 CFR Part 170). The WPS applies when this product is used to produce agricultural plants on farms, forests, nurseries, greenhouses or sodfarms.
Keep all unprotected persons out of operating areas or vicinity where there may be drift.
Do not enter or allow others to enter treated areas until sprays have dried.

DISCLAIMER, RISKS OF USING THIS PRODUCT, LIMITED WARRANTY AND LIMITATION OF LIABILITY

IMPORTANT: Read the entire Label including this Disclaimer, Risks of Using this Product, Limited Warranty, and Limitation of Liability before using this product. If the terms are not acceptable THEN DO NOT USE THE PRODUCT; rather, return the unopened product within 15 days of purchase for a refund of the purchase price.

RISKS OF USING THIS PRODUCT
The Buyer and User (referred to collectively herein as "Buyer") of this product should be aware that there are inherent unintended risks associated with the use of this product which are impossible to eliminate. These risks include, but are not limited to, injury to plants and crops to which this product is applied,
(continued)

(continued)
lack of control of the target pests and resistance of the target pest to this product. Such risks of crop injury, non-performance, resistance or other unintended consequences are unavoidable and may result because of such factors as weather, soil conditions, disease, moisture conditions, irrigation practices, condition of the crop at the time of application, presence of other materials either applied in the tank mix with this product or prior to application of this product, cultural practices or the manner of use or application, (or a combination of such factors) all of which are factors beyond the control of Valent. The Buyer should be aware that these inherent unintended risks may reduce the harvested yield of the crop in all or a portion of the treated acreage, or otherwise affect the crop such that additional care, treatment and expense are required to take the crop to harvest. If the Buyer chooses not to accept these risks, THEN THIS PRODUCT SHOULD NOT BE APPLIED. By applying this product Buyer acknowledges and accepts these inherent unintended risks AND TO THE FULLEST EXTENT ALLOWED BY LAW, AGREES THAT ALL SUCH RISKS ASSOCIATED WITH THE APPLICATION AND USE ARE ASSUMED BY THE BUYER.
Valent shall not be responsible for losses or damages (including, but not limited to, loss of yield, increased expenses of farming the crop or such incidental, consequential or special damages that may be claimed) resulting from use of this product in any manner not set forth on the label. To the extent allowed by law Buyer assumes all risks associated with the use of this product in any manner or under conditions not specifically directed or approved on the label.
LIMITED WARRANTY
Valent warrants only that this product conforms to the chemical description on the label and is reasonably fit for the purposes stated in the label, under average use conditions, when used strictly in accordance with the label and subject to the Risks of Using This Product as described above. To the extent consistent with applicable law AND AS SET FORTH ABOVE, VALENT MAKES NO OTHER WARRANTIES, EITHER EXPRESSED OR IMPLIED. No agent or representative of Valent or Seller is authorized to make or create any other express or implied warranty.
(continued)

(continued)

LIMITATION OF LIABILITY

To the fullest extent allowed by law, Valent or Seller is not liable for any incidental, consequential, indirect or special damages resulting from the use or handling of this product. The limitation includes, but is not limited to, loss of yield on all or any portion of the treated acreage, increased care, treatment or other expenses required to take the crop to harvest, increased finance charges or altered finance ratings, emotional or mental distress and/or exemplary damages. TO THE FULLEST EXTENT ALLOWED BY LAW, THE EXCLUSIVE REMEDY OF THE BUYER, AND THE EXCLUSIVE MAXIMUM LIABILITY OF VALENT OR SELLER FOR ANY AND ALL CLAIMS, LOSSES, INJURIES OR DAMAGES (INCLUDING CLAIMS BASED ON BREACH OF WARRANTY, CONTRACT, NEGLIGENCE, TORT, STRICT LIABILITY OR OTHERWISE) RESULTING FROM THE USE OR HANDLING OF THIS PRODUCT SHALL BE THE RETURN OF THE PURCHASE PRICE OF THIS PRODUCT OR, AT THE ELECTION OF VALENT OR SELLER, THE REPLACEMENT OF THE PRODUCT. PROMPT NOTICE OF CLAIM

To the extent consistent with applicable law allowing such requirements, Valent must be provided notice as soon as Buyer has reason to believe it may have a claim, but in no event later than twenty-one days from date of planting, or twenty-one days from the date of application, whichever is latter, so that an immediate inspection of the affected property and growing crops can be made.

To the extent consistent with applicable law, if Buyer does not notify Valent of any claims, in such period, it shall be barred from obtaining any remedy.

NO AMENDMENTS

Valent and Seller offer this product, and Buyer accepts it, subject to the foregoing Disclaimer, Risks of Using This Product, Limited Warranty and Limitation of Liability, which may not be modified by any oral or written agreement.

GENERAL INFORMATION

Tourney Fungicide is formulated as 50% water dispersible granular (WDG). The active ingredient in *Tourney* Fungicide is metconazole, a broad-spectrum triazole fungicide that works by inhibiting demethylation and other processes in sterol biosynthesis. *Tourney* Fungicide is systemic and is quickly absorbed into plant tissue. *Tourney* Fungicide displays preventative and curative properties.

Tourney Fungicide may be used for disease control in turfgrass on golf courses, lawns and landscape areas around residential, institutional, public, commercial and industrial buildings, parks, recreational areas, athletic fields and sod farms.

Tourney Fungicide provides optimal disease control when applied in combination or as part of a rotation in a regularly scheduled spray program with other effective fungicides that have different modes of action (i.e., non Group 3 fungicides).

MODE OF ACTION

The active ingredient in *Tourney* Fungicide, metconazole, belongs to the sterol biosynthesis inhibitor group of fungicides as classified by the U.S. EPA and Canada PMRA as a target site of action Group 3 fungicide.

RESISTANCE MANAGEMENT

Tourney Fungicide contains metconazole, a Group 3 fungicide (sterol biosynthesis inhibitors). Metconazole is effective against pathogens resistant to fungicides with modes of action different from those of target site Group 3 Fungicides (e.g., dicarboximides, strobilurins, benzimidazoles or phenylamides). Fungal isolates with acquired resistance to metconazole may eventually dominate the fungal population if metconazole is used repeatedly at the same site or in successive years as the primary method of control for the targeted pathogen species. Selection for resistance may be particularly rapid if resistance to Group 3 fungicides is already present in the pathogen population. This may result in reduced disease control by *Tourney* Fungicide or other Group 3 fungicides. Follow the recommendations below to delay the development of fungicide resistance:

1. **Tank mixtures:** If *Tourney* Fungicide is used in tank mixtures with fungicides from different target site of action Groups that are registered and/or permitted for the same use and that are effective against the pathogens of concern, use at least the minimum labeled rates of each fungicide in the tank mix.
2. **Integrated Pest Management (IPM):** Integrate *Tourney* Fungicide into an overall disease and pest management program. Follow cultural practices known to reduce disease development. Consult your local extension specialist, certified advisor and/or Valent representative for additional IPM strategies established for your area. *Tourney* Fungicide may be used in advisory (disease forecasting) programs, which recommend application timing based on environmental factors favorable for disease development.

4

3. **Monitoring:** Monitor efficacy of all fungicides used in the disease management program against the targeted pathogen and record other factors that may influence fungicide performance and/or disease development.
4. **Reporting:** If a Group 3 target site fungicide appears to be less or no longer effective against a pathogen that it previously controlled or suppressed, contact a Valent representative, local extension specialist or certified advisor to assist in determining the cause of reduced performance.

JAR TEST TO DETERMINE COMPATIBILITY OF ADJUVANTS AND *TOURNEY* FUNGICIDE

Perform a jar test before mixing commercial quantities of *Tourney* Fungicide, when using *Tourney* Fungicide for the first time, when using new adjuvants, when using new tank mixes or when a new water source is being used.

1. Add 1 pt of the water to a quart jar. Use water from the same source and temperature as water that will be used in the spray tank mixing operation.
2. Add about 1 teaspoon (2.4 grams) of *Tourney* Fungicide to the quart jar; gently mix until product goes into suspension.
3. Add appropriate amount of each tank mix adjuvant or partner.
4. Place cap on jar, invert 10 times, let stand for 15 minutes and evaluate.
5. An ideal tank mix combination will be uniform and free of large suspended particles. If any of the following conditions are observed, reevaluate the choice of the adjuvant:
 - a) Layer of oil or globules on the mixture's surface.
 - b) Flocculation: fine particles in suspension or as a layer on the bottom of the jar.
 - c) Clabbering: thickening texture (coagulated) like gelatin.

TANK MIX PARTNERS

Tourney Fungicide is compatible with most herbicides, insecticides, fungicides and other types of tank mix components. If tank mixes are used, follow all applicable restrictions and precautions on all labels. Do not tank mix with any product which has a prohibition on tank mixing. When evaluating potential tank mix partners, always apply to a small area of target plants and then monitor for adverse affects for at least two weeks before making large-scale applications.

SPRAYER PREPARATION

Before applying *Tourney* Fungicide, start with clean, well maintained application equipment. The spray tank hoses and booms must be cleaned to ensure no residue from the previous spraying operation remains in the sprayer. The spray equipment must be cleaned according to the manufacturer's directions for the last product used before the equipment is used to apply *Tourney* Fungicide. Check nozzles frequently for accuracy. If two or more products were tank mixed prior to *Tourney* Fungicide application, follow the most restrictive cleanup procedure.

MIXING INSTRUCTIONS

1. Fill clean spray tank 1/2 to 2/3 of desired level with clean water.
2. While agitating, slowly add the *Tourney* Fungicide to the spray tank. A rippling or rolling action on the water surface will occur as the result of the agitation.
3. If tank mixing *Tourney* Fungicide with other labeled pesticides, add water soluble bags first, followed by dry formulations, flowables, emulsifiable concentrates and then solutions.
4. Add any required adjuvants.
5. Fill spray tank to desired level with water. Continue agitation until all spray solution has been applied.
6. Mix only the amount of spray solution that can be applied the day of mixing. Apply *Tourney* Fungicide within 12 hours of mixing.

SPRAYER CLEANUP

Clean the spray equipment each day following *Tourney* Fungicide application. After *Tourney* Fungicide is applied, follow the steps below to clean the spray equipment:

1. Completely drain the spray tank, rinse the sprayer thoroughly, including the inside and outside of the tank and all in-line screens.
2. Fill the spray tank with clean water and flush all hoses, booms, screens and nozzles.
3. Drain tank completely.
4. Remove all nozzles and screens and rinse them in clean water.

SPRAY DRIFT MANAGEMENT

It is the responsibility of the applicator to ensure that spray drift does not occur. Do not apply this product when weather conditions favor spray drift from treated areas. The interaction of many equipment and weather related factors determine the potential for spray

5

drift. The applicator is responsible for considering all of these factors when making decisions. Where states have more stringent regulations, they must be observed.

TURFGRASS

- *Tourney* Fungicide may be used for disease control on golf courses, lawns and landscape areas around residential, institutional, public, commercial and industrial buildings, parks, recreational areas, athletic fields and sod farms.
- Use *Tourney* Fungicide in conjunction with turf management practices that promote good plant health and optimum disease control. Proper identification of disease infestations is essential for providing control. Consult diagnostic guides, kits or other means of identification to determine the best control measures.
- *Tourney* Fungicide is more effective when used preventatively or early in disease development. Length of disease control will vary according to local environmental conditions, disease pressure and turfgrass management practices.
- Apply to dry turf or after mowing. For control of foliar diseases, allow turf to dry before irrigation. For control of soil borne diseases, *Tourney* Fungicide can be watered in after application.
- *Tourney* Fungicide may be tank mixed with other registered turfgrass fungicides. Perform a jar test as described above to determine compatibility before making applications. Directions for use of *Tourney* Fungicide have been developed using no adjuvant in the spray solution.
- *Tourney* Fungicide can injure golf course greens that are under high heat (temperatures exceeding 90°F) and/or drought stress. Under high heat and/or drought stress conditions (mid to late summer), do not apply more than 16 oz per acre (0.37 oz per 1,000 sq ft) every 30 days.
- Important: Under conditions of optimal disease development (such as high humidity and temperature), use higher labeled rates and shorter application intervals. When applications are made curatively, use higher rates of *Tourney* Fungicide and short application intervals. Use higher application rate in areas with a histo-

ry of severe disease pressure.

- Failure to follow label directions may result in turfgrass injury and/or inferior disease control.

APPLICATION DIRECTIONS

Apply *Tourney* Fungicide using standard, low-pressure spray equipment designed to deliver coarse to medium size spray droplets (do not use nozzles designed to deliver fine droplets). Apply in a sufficient volume of water to provide thorough spray coverage and a uniform spray pattern. Do not position the spray boom more than 20 inches above the turf. For foliar disease, apply 2 gals of spray solution per 1,000 sq ft. For crown and root diseases, use 2 to 4 gals of spray solution per 1,000 sq ft. For spot treatment, mix 0.1 to 0.2 oz of *Tourney* Fungicide per gallon of water.

TURFGRASS TOLERANCE

Due to the large number of turfgrass types, possible tank mixes and application techniques, it has not been determined if *Tourney* Fungicide can be safely used on all turfgrasses under all conditions. Before making a large scale application, determine safety in a small test area. Monitor the test area for at least 2 weeks to determine safety under local growing conditions.

RECOMMENDED TURFGRASS SPECIES

Annual Bluegrass
Bentgrass
Centipedegrass
Fescue
Kentucky Bluegrass
Perennial Ryegrass
St. Augustinegrass
Seashore Paspalum
Zoysia

RESTRICTIONS AND LIMITATIONS

- Do not apply more than 4 lbs (2 lbs ai) of *Tourney* Fungicide per acre per year.
- Do not apply directly to bermudagrass greens.
- Do not apply through any type of irrigation system.
- Do not apply by aerial application.
- Do not graze animals on treated areas for one year after application.
- Do not feed clippings from treated areas to livestock or poultry.

Table 1. TURFGRASS – Specific Diseases, Rates, Timings and Application Information

Diseases (<i>Pathogens</i>)	Application Rates		Application Interval/ Timing	Special Instructions
	oz/1,000 sq ft	oz/A		
Dollar Spot (<i>Sclerotinia homeocarpa</i>)	0.18 to 0.37	8 to 16	14 to 21 days	Use preventatively. Begin application when conditions favor disease development.
Brown Patch (<i>Rhizoctonia solani</i>) Anthracnose (<i>Colletotrichum graminicola</i>)	0.28 to 0.37	12 to 16	14 to 21 days	Begin applications when conditions favor disease development.
Gray Leaf Spot (<i>Pyricularia grisea</i>) Necrotic Ring Spot (<i>Ophiosphaerella korrae</i>) Red Thread (<i>Laetisaria fuciformis</i>) Rhizoctonia Large Patch (<i>Rhizoctonia solani</i>) Rust Diseases (<i>Puccinia</i> spp.) Summer Patch (<i>Magnaporthe poae</i>) Take-all Patch (<i>Gaeumannomyces graminis</i>) Waitea Patch Brown Ring Patch (<i>Waitea circinata</i>) Zoysia Patch (<i>Rhizoctonia solani</i>)	0.37	16	14 days	Begin applications when conditions favor disease development or when the disease first appears.
Fairy Ring (Various <i>Basidiomycetes</i>)	0.37	16	21 days	Apply as soon as possible after first symptoms appear. Apply in a volume of 4 gals per 1,000 sq ft. For optimal control reapply after 21 days. Symptoms may take several weeks to disappear following application.
Pink Snow Mold Fusarium Patch (<i>Microdochium nivale</i>) Gray Snow Mold (<i>Typhula</i> spp.) Yellow Patch (<i>Rhizoctonia cerealis</i>)	0.37 to 0.44	16 to 19.2	Late Fall	Make 1 to 2 applications in combination with PCNB, chlorothalonil or other fungicides active on snow mold in late fall before snow cover and if possible, one application during a mid-winter thaw.

**Tourney Fungicide Rate Conversion Chart
for Turfgrass**

oz product/ 1000 sq ft	oz product/ acre	lbs product/ acre	lbs ai/ acre
0.18	8	0.5	0.25
0.28	12	0.75	0.38
0.37	16	1.0	0.50
0.44	19.2	1.2	0.60

1 level teaspoon contains 2.4 grams, and one 8 fl oz measuring cup contains 4.1 oz of *Tourney* Fungicide.

STORAGE AND DISPOSAL

Do not contaminate water, food or feed by storage, disposal or cleaning of equipment.

PESTICIDE STORAGE

Store in a cool, dry secure place.
Keep pesticide in original container.
Keep container closed when not in use.

Do not put concentrate or dilute into food or drink containers.

Do not store in or around the home.

For help with any spill, leak, fire or exposure involving this material, call day or night 800-892-0099.

PESTICIDE DISPOSAL

Waste resulting from the use of this product may be disposed of on site or at an approved waste disposal facility.

CONTAINER HANDLING

Nonrefillable container. Do not reuse or refill this container. Offer for recycling, if available. Clean container promptly after emptying. Triple rinse as follows: Empty the remaining contents into application equipment or a mix tank and drain for 10 seconds after the flow begins to drip. Fill the container 1/4 full with water and recap. Shake for 10 seconds. Pour rinsate into application equipment or a mix tank or store rinsate for later use or disposal. Drain for 10 seconds after the flow begins to drip. Repeat this procedure two more times.

©2017 Valent U.S.A. LLC

Tourney is a registered trademark of Valent U.S.A. LLC

Manufactured for:

Valent U.S.A. LLC

P.O. Box 8025

Walnut Creek CA 94596-8025

Made in U.S.A.

Form 1661-C

059639-00144.20091217.V10116VPP.FINAL

EPA Reg. No. 59639-144

EPA Est. No. 67545-AZ-1

FORM: 1661-C
NAME: Tourney Fungicide
KIND: Booklet Label
SPEC: Total 6.25 x 6.5

PRODUCT SIZE: 5 Pounds
LABEL SIZE: 5.5"(w) x 6.5"(h) - book closed
11"(w) x 6.5"(h) - book open
6.25"(w) x 6.5"(h) - base

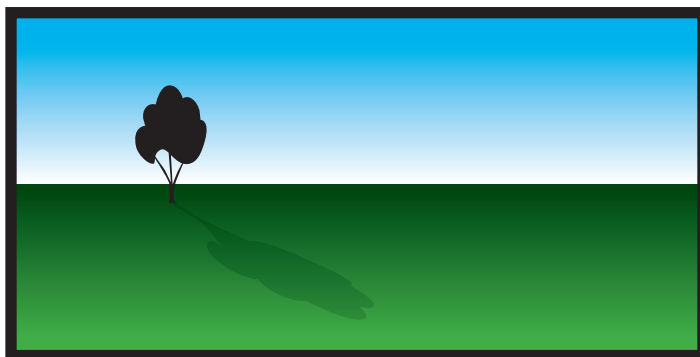
BLACK
CYAN
MAGENTA
YELLOW

Base

GROUP 3 FUNGICIDE



Tourney®



F U N G I C I D E



TURFGRASS FUNGICIDE
A SYSTEMIC FUNGICIDE FOR CONTROL OF
CERTAIN TURFGRASS DISEASES

Active Ingredient	By Wt
*Metconazole	50%
Other Ingredients	50%
Total	100%

*5-[(4-chlorophenyl)methyl]-2,2-dimethyl-1-(1H-1,2,4-triazol-1-ylmethyl)cyclopentanol

Tourney® Fungicide is a water dispersible granule containing 50% active ingredient.

EPA Reg. No. 59639-144
EPA Est. No. 67545-AZ-1

KEEP OUT OF
REACH OF CHILDREN
CAUTION
SEE INSIDE BOOKLET FOR
ADDITIONAL PRECAUTIONARY
STATEMENTS.

NET CONTENT 5 POUNDS

Form 1661-C

6.5"

6.25"